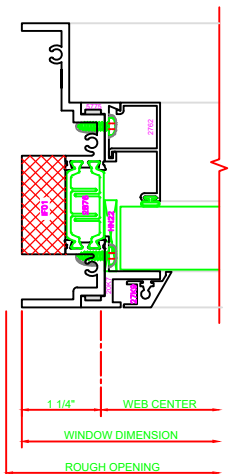


130	HEAD
	SERIES: 450G CASEMENT IN 4-BAR ARMS

433	JAMB
	SERIES: 450G CASEMENT IN 4-BAR ARMS

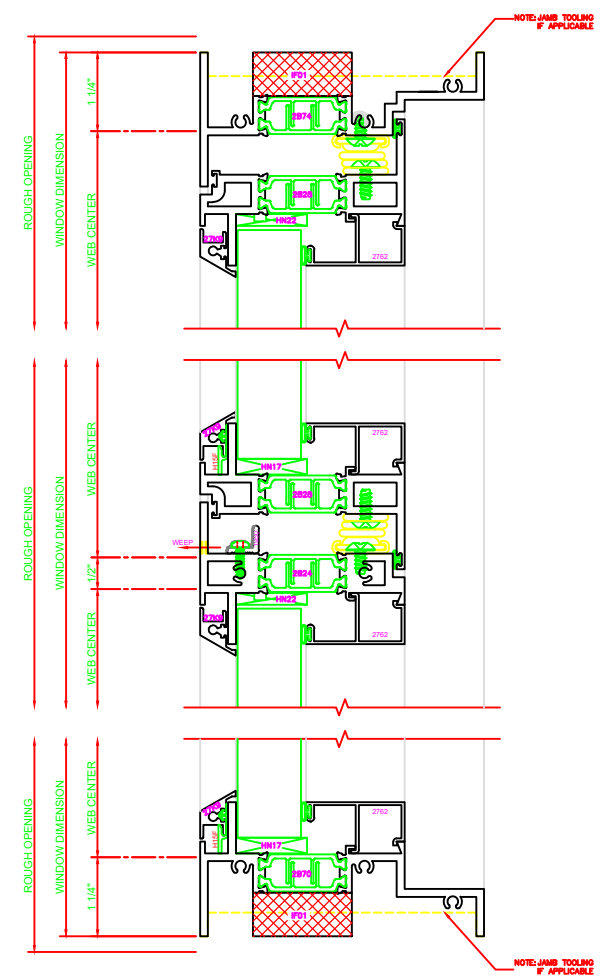
434	JAMB
	SERIES: 450G CASEMENT IN



402	JAMB
	SERIES: 450G FIXED

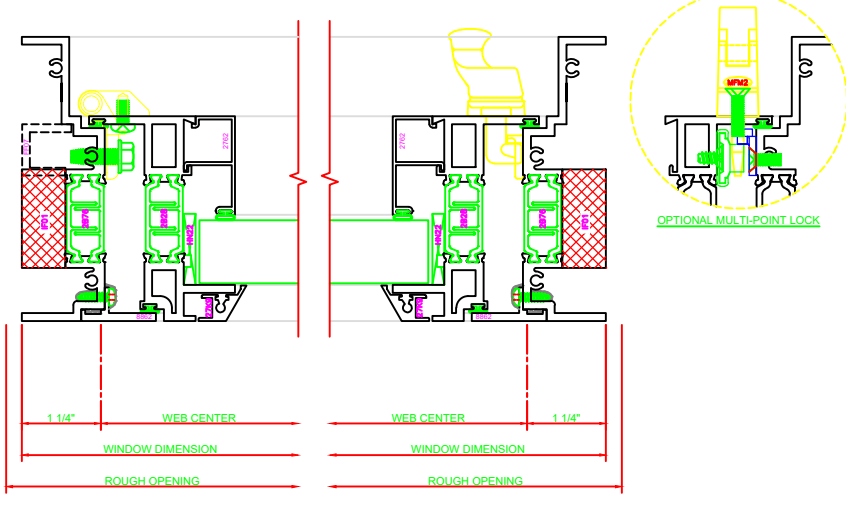
531	MEETING RAIL
	SERIES: 450G C.I./FIXED 4-BAR ARMS

200	SILL
	SERIES: 450G FIXED



## 4-BAR ARMS BUTT HINGE

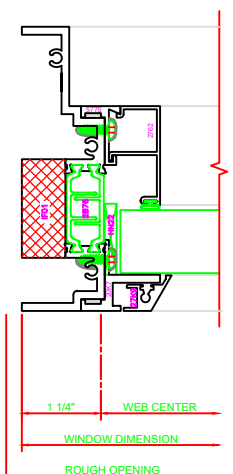
**13** **ERECTOR NOTE:**  
THE HINGED JAMB FRAME SHALL BE INSTALLED PLUMB. ALL HINGES SHALL BE SECURELY BLOCKED AND ANCHORED TO THE CONDITION THROUGH THE HINGES OR AS CLOSE AS POSSIBLE TO THE HINGES.



131	HEAD
	SERIES: 450G CASEMENT IN BUTT HINGE

435	JAMB
	SERIES: 450G CASEMENT IN BUTT HINGE

434	JAMB
	SERIES: 450G CASEMENT IN



402	JAMB
	SERIES: 450G FIXED

533	MEETING RAIL
	SERIES: 450G C.I./FIXED BUTT HINGE

200	SILL
	SERIES: 450G FIXED

